



RAMGA presents

It's That Time of Year...

**Planning
Purchasing
Planting**



Saturday, May 8, 2021

Welcome

- Dr. Karen Lyons, Help Desk at VA Tech Cooperative Extension Office
- 150 Main St., Lexington, VA, 2nd floor
- RAMGA. org



How to contact the Help Desk

Web: RAMGA.org/gardening-questions: Help Line Submission

Email: helpline@ramga.org

Phone: (540) 463-4734

VCE office: CURRENTLY CLOSED TO VISITORS

2nd floor of Rockbridge Co. office building, Main Street, Lexington;
future drop-in days to be determined



Rockbridge Area Master Gardeners Association

[HOME](#)[What We Do](#)[Join Us](#)[Gardening Questions](#)[What's Happening](#)[Members Section](#)[More...](#)

Help Line/Help Desk

The Help Line/Help Desk is a vital part of the VCE Master Gardener Program assisting, when possible, the professional staff in providing information to the public regarding a huge variety of plant-related questions. Staffed by the local Master Gardener Volunteers during the growing season (April to October), the Desk is located in the VCE office on the second floor of the Rockbridge County Office Building on Main Street. Individual Master Gardeners usually volunteer for a two hour period in either the morning or afternoon one day a week.

The Master Gardener Volunteers perform a variety of activities including taking calls from the Public with plant-related questions, distributing soil sample kits, preparing Plant Disease Diagnosis Requests which are forwarded to Virginia Tech for review, and responding to the Public with results.

The Help desk has an extensive reference library to help diagnose plant problems. In addition we can use the resources of Virginia Tech in identifying plant problems and diseases. We are available to help you with your gardening questions. You may call us at (540) 463-4734, fill in the form below, or email us at helpline@ramga.org.

Help Line Submission

<input type="text"/>	<input type="text"/>
<input type="text"/>	<input type="text"/>
<input type="text"/>	
<input type="text"/>	

Question of the Month

Q: When should I prune my roses?

A: Early spring is the best time to perform major rose pruning although dead/diseased wood can be removed at any time. Advice from the Shenandoah Rose Society recommends waiting till after April 1st to prune, ensuring that late winter cold-snaps will not harm emerging foliage.

Since local weather conditions vary, another guide is to prune when the forsythia blooms in your area. For more information:

<https://www.rhs.org.uk/Advice/profile?pid=186>

Planning for Your Garden

❖ Ask what you want to achieve?

- To attract birds, butterflies, wildlife
- To start vegetable garden
- To use containers in small garden/yard
- Do the research

Do the Research

- Attracting wildlife to your garden?
- Go to internet
 - National Wildlife Federation, Native Plant Finder
 - [audubon.org/native-plants](https://www.audubon.org/native-plants)

Most Recent

[Native Plants](#)

[Healthy Ecosystems](#)

[D.I.Y.](#)

[Cover](#)

[Water](#)

[Food](#)

[Birds](#)

[Pollinators](#)

[Design](#)



Vegetable Garden?

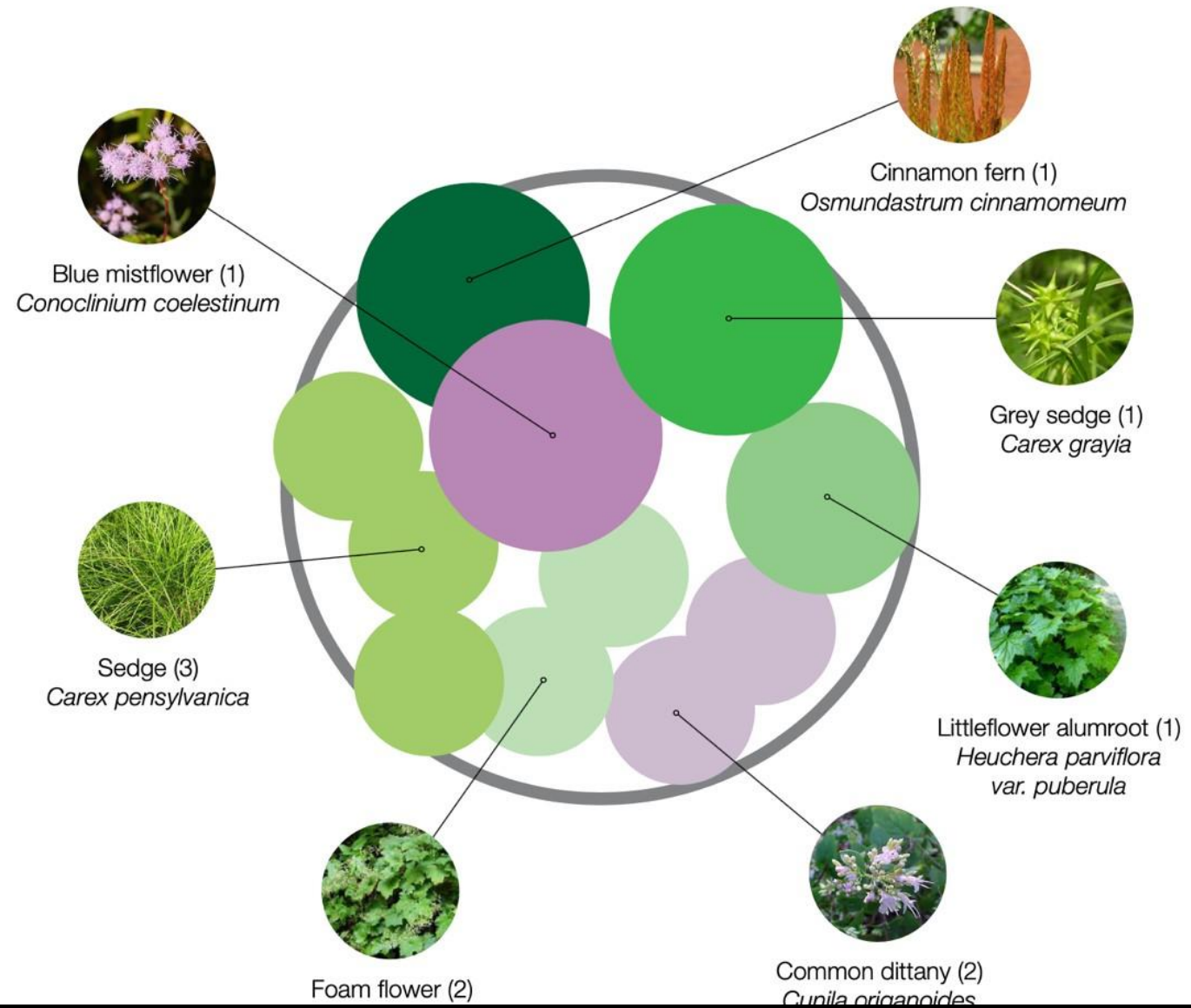
- pubs.ext.vt.edu
- Southernexposure.com
- Things you need to know
- For example, summer Squash

Using containers to attract wildlife or grow vegetables

- pubs.ext.vt.edu
- missouribotanicalgarden.org
search container gardening

From the Missouri Botanical Garden

Containers for Shade | Container 1





Rockbridge Area Master Gardeners Association

[HOME](#)[What We Do](#)[Join Us](#)[Gardening Questions](#)[What's Happening](#)[Members Section](#)[More...](#)

Rockbridge Master Gardeners Plant Sale

[Sale Home](#)[Annuals](#)[Bulbs](#)[Grasses](#)[Groundcove...](#)[Host Plants](#)[Pollinators](#)[Herbs](#)[Part Shade](#)[Shade](#)[Shrubs](#)[Sun-Spring](#)[Native Plants](#)[Sun-Summer](#)[Sun-Fall](#)[Trees](#)[Vegetables](#)

The Plant Sale will be live for orders from May 8 through May 14. Click on the above categories to view plants available. You may also use the search box on each page to search for a specific plant by either scientific or common name.

Payment can be made with major credit cards, debit cards, or PayPal. Unfortunately, for this virtual sale we cannot accept checks or cash.

Plant pickup will be at the Kerrs Creek Volunteer Fire Department, 2880 West Midland Trail, Lexington. In order to maintain social distancing, you will be assigned a specific pickup time for May 15.

Virginia Hardiness Zone Map

Zone 7a

Last Spring Frost: 4/15 – 4/25

First Fall Frost: 10/15 – 10/25

Zone 6b

Last Spring Frost:
4/25 – 5/5

First Fall Frost:
10/5 – 10/15

Zone 6a

Last Spring Frost:
5/5 – 5/15

First Fall Frost:
10/5 – 10/15

Zone 7b

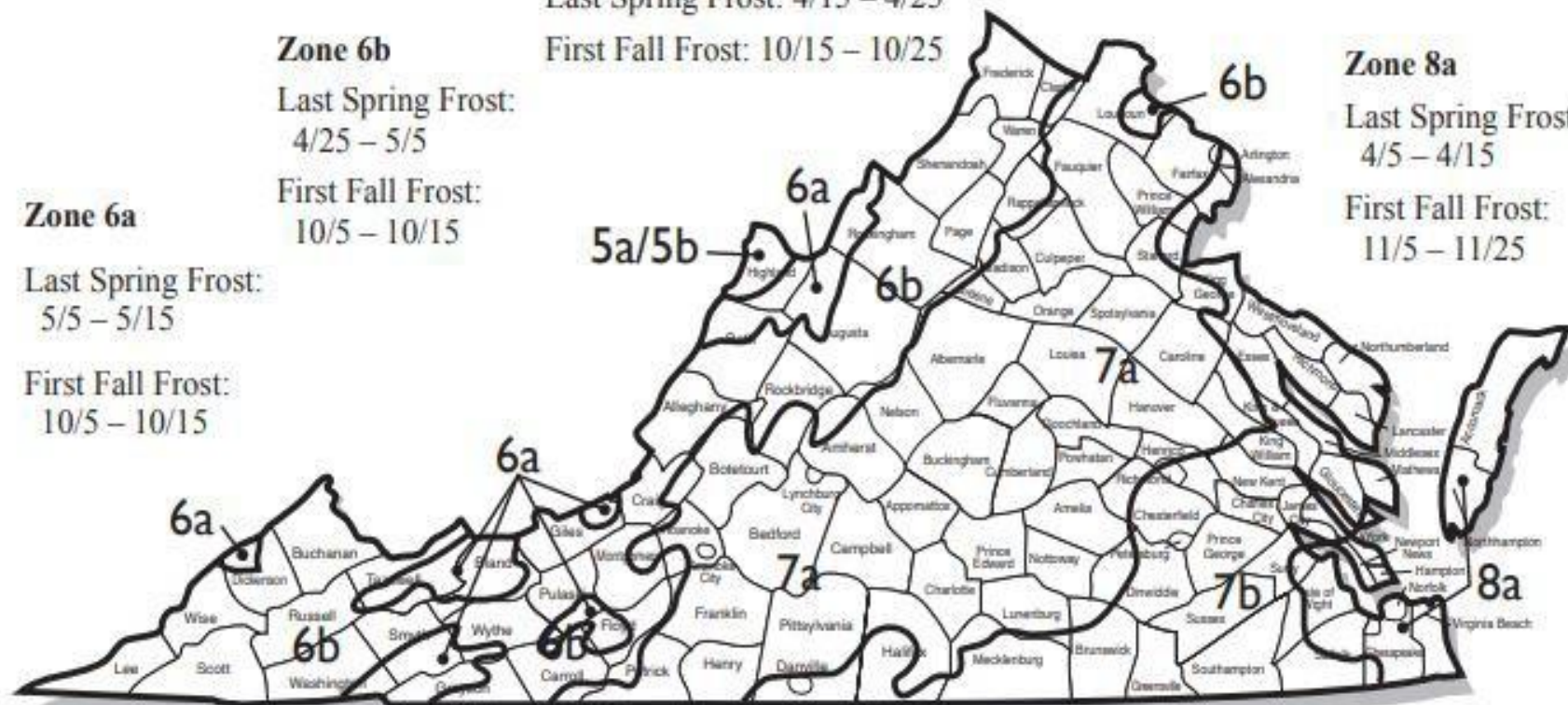
Last Spring Frost: 4/5 – 4/15

First Fall Frost: 10/25 – 11/5

Zone 8a

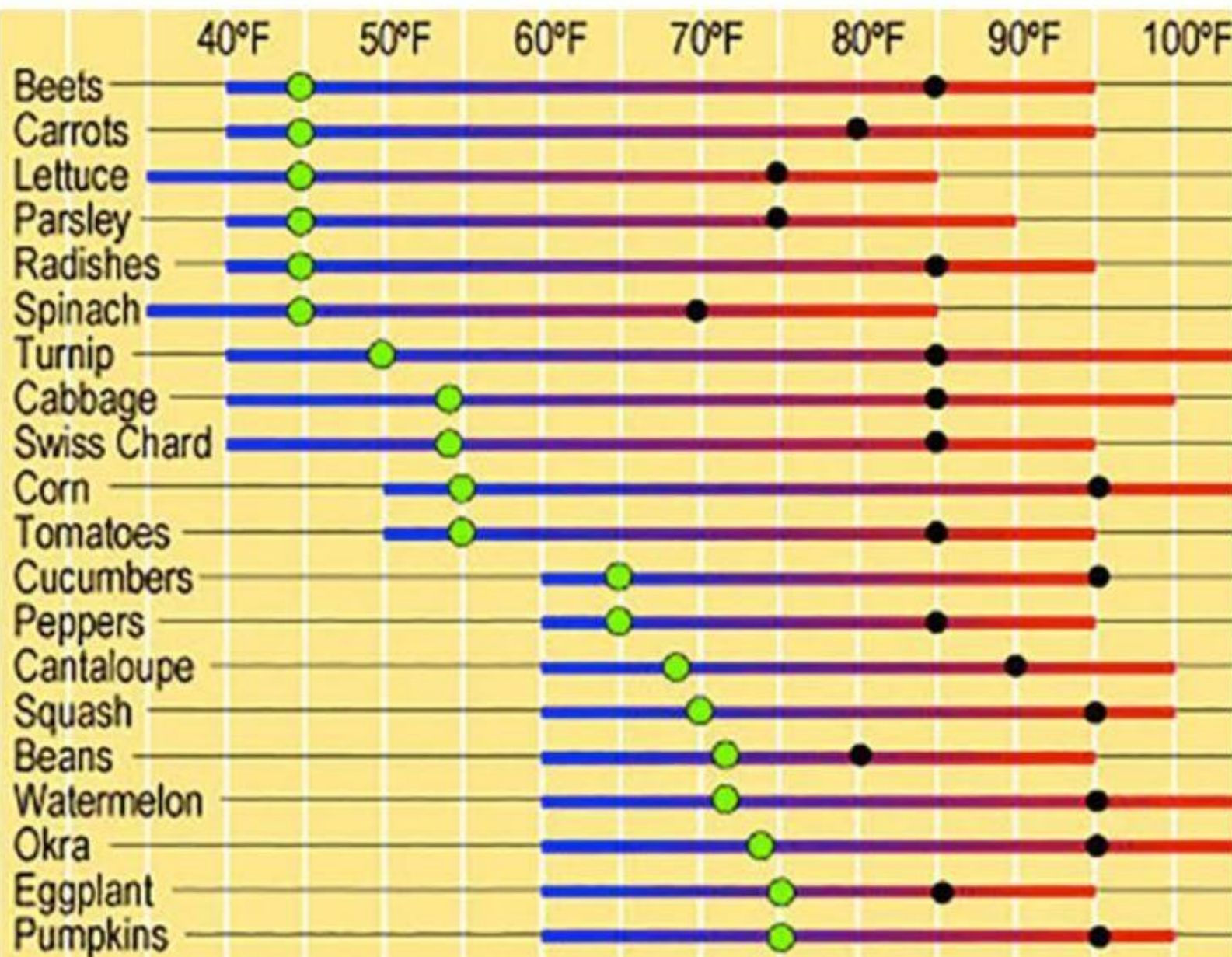
Last Spring Frost:
4/5 – 4/15

First Fall Frost:
11/5 – 11/25

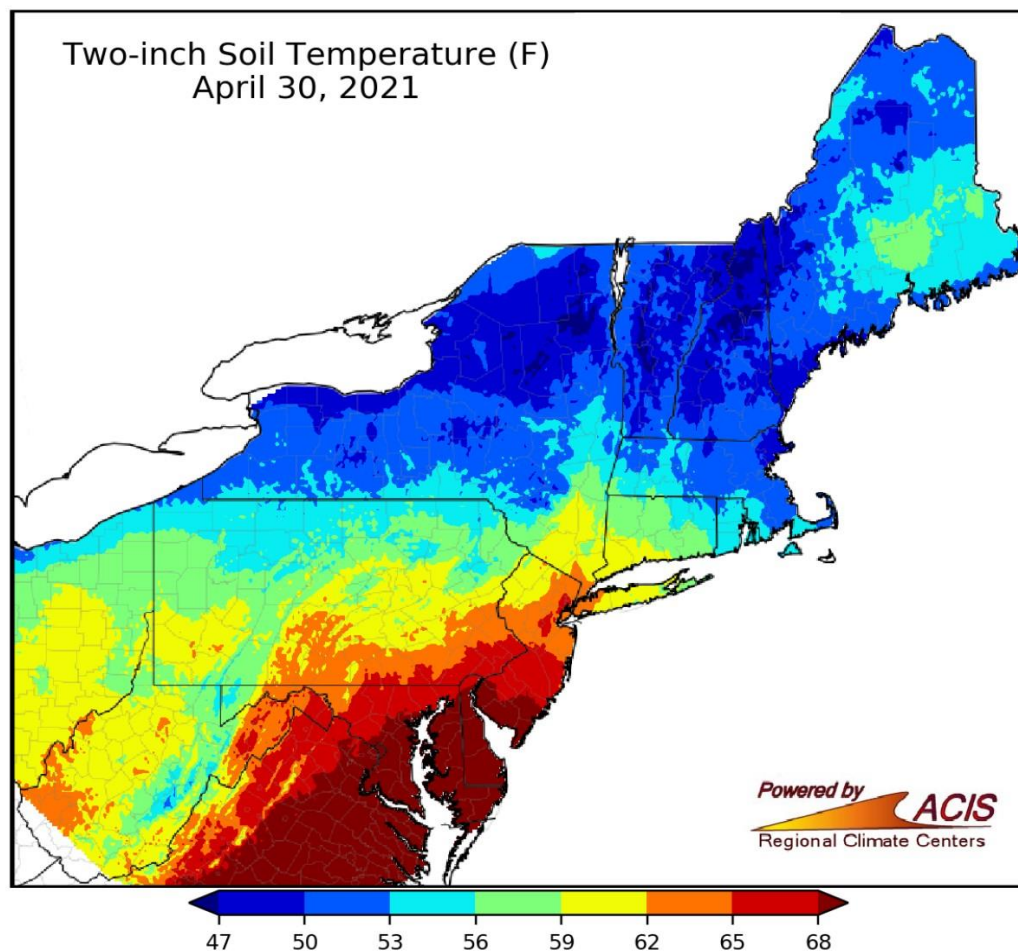


Virginia Cooperative Extension

www.ext.vt.edu

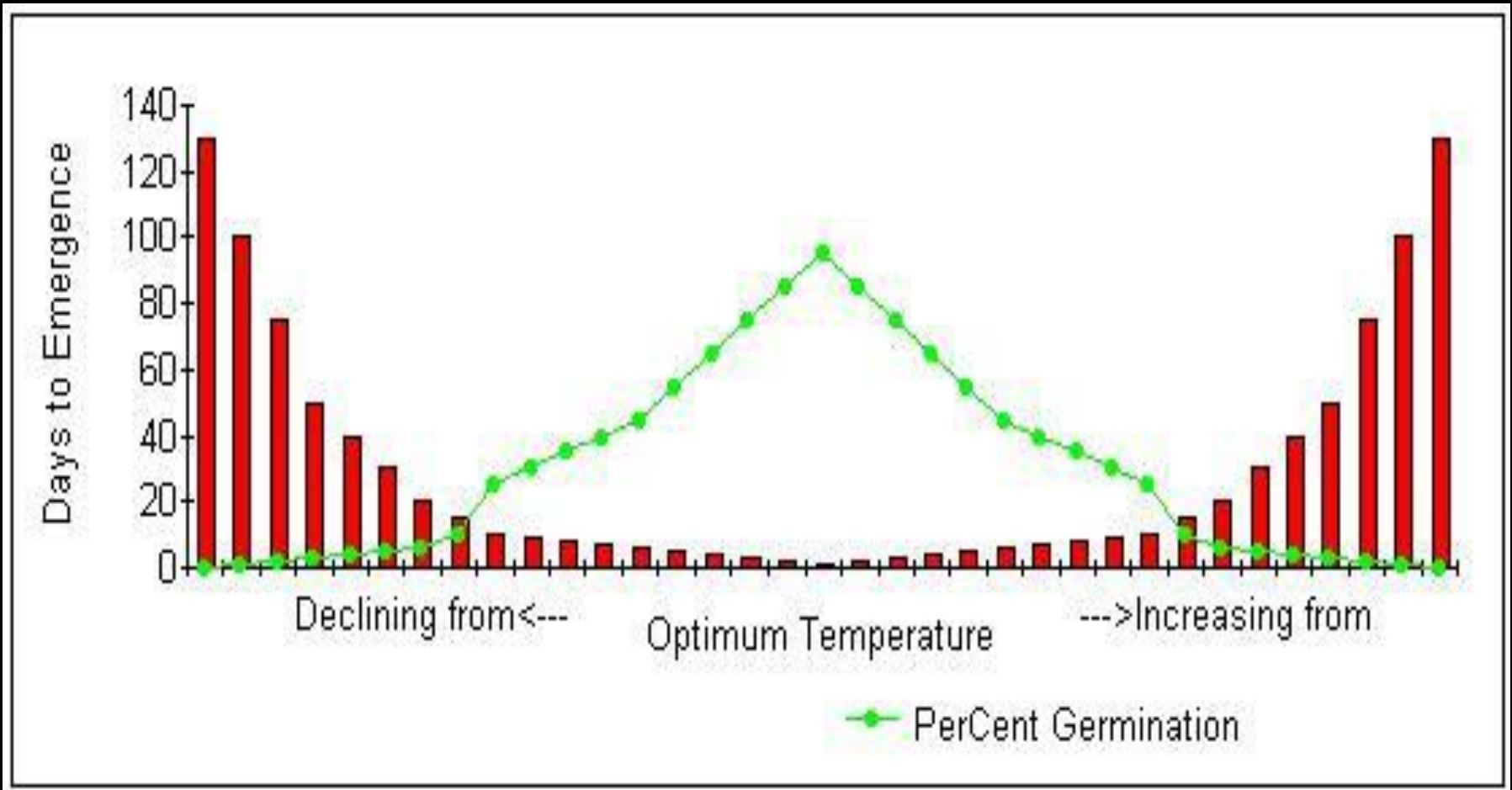


Planting



Accuracy of the weather data is the responsibility of the owners of the weather station instruments. NEWA is not responsible for accuracy of the weather data collected by instruments in the network. If you notice erroneous or missing weather data, contact [NEWA](#) and we will contact the owner of the instrument.

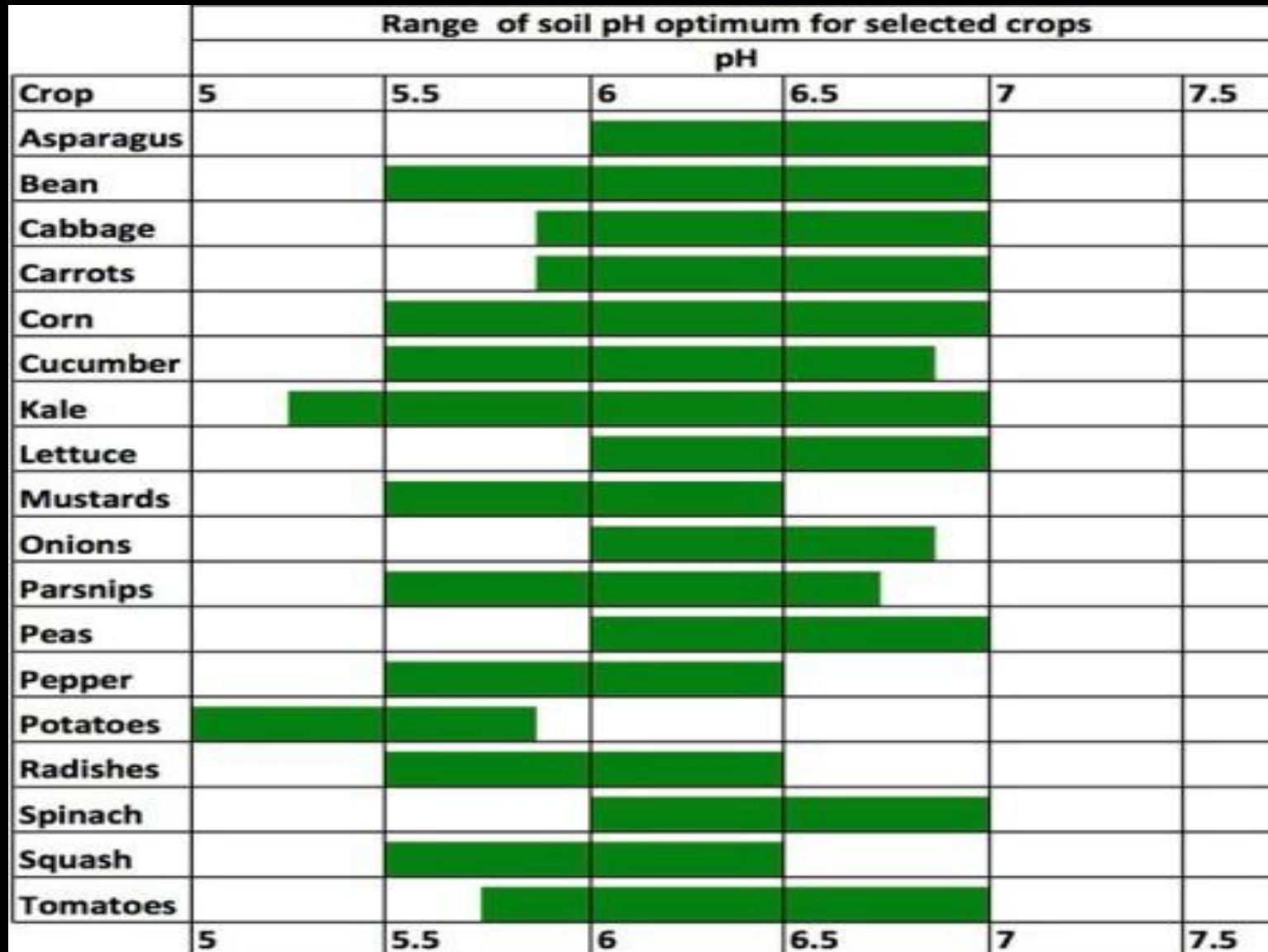


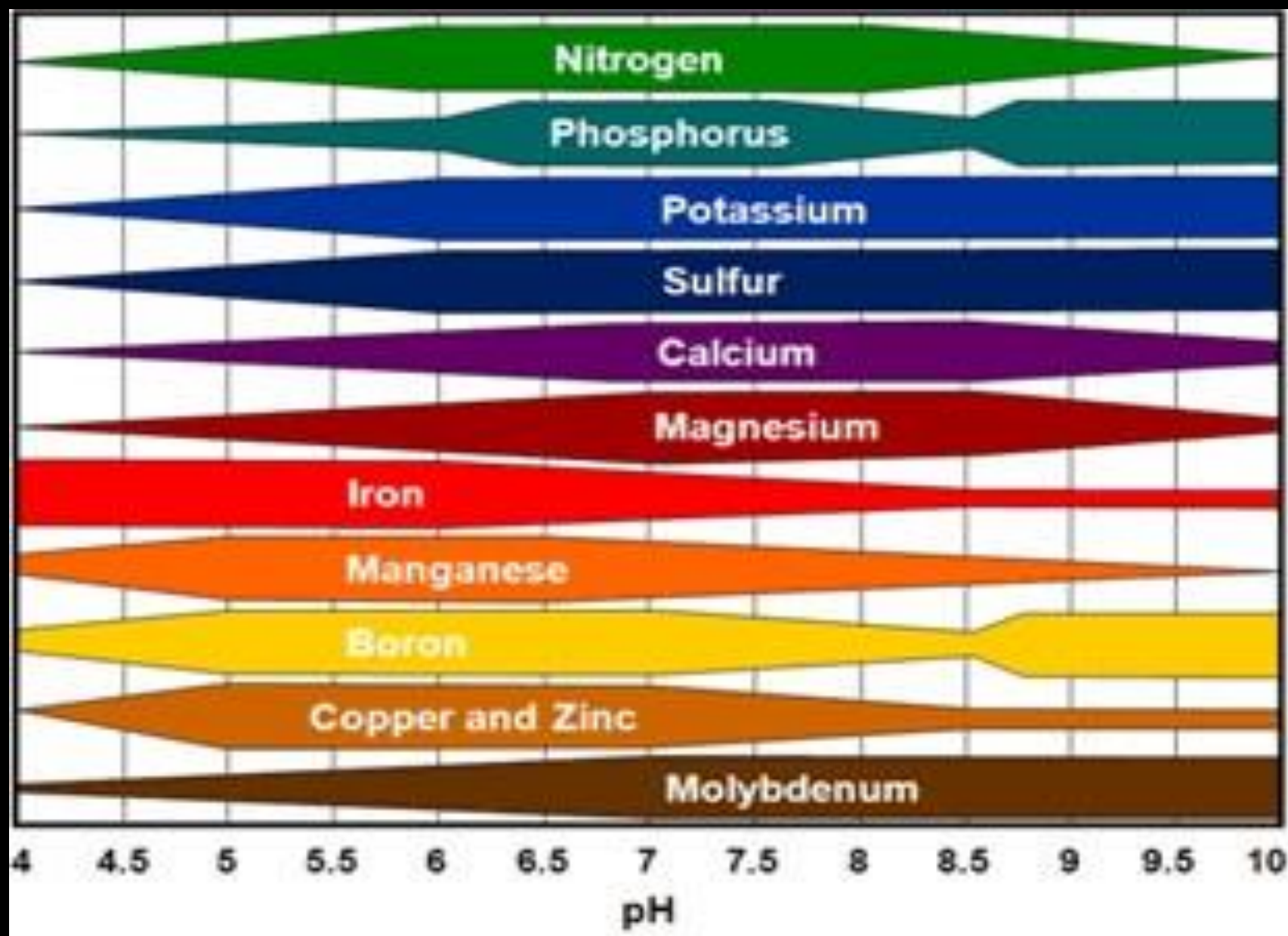


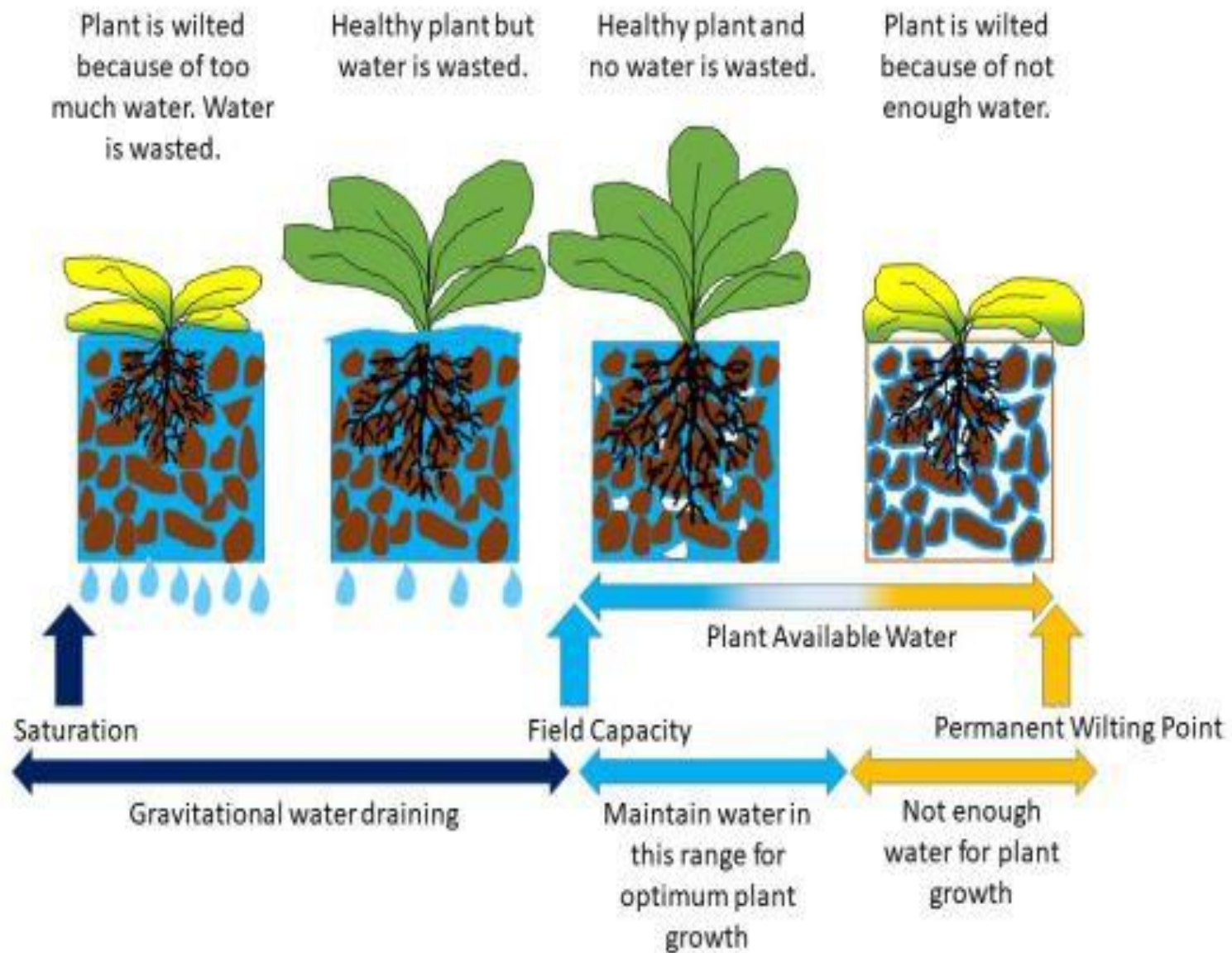
Know Plant's Soil Requirements



pH Preferences - Vegetables







Proper Watering Techniques

- ❖ Water early in the morning OR evening 2 hours before sunset
- ❖ Water less frequently, more deeply
- ❖ Vegetable crops need 1" water/ week on average
- ❖ Plant ornamentals adapted to local rain amounts

Plant Sale

The Plant Sale Online Store – Open May 8th-14th
on following website: www.MGPlantSale.org

The Plant Pick-up - Saturday, May 15, 2021

Location – Kerrs Creek Fire Station

2880 W. Midland Trail

Lexington, VA 24450

Purchasing – Pay Pal, Debit Card, or Credit Card

Thank You!

Make sure you stay connected with the latest Community
Newsletter

The Garden Gate
Subscribe at:

<https://www.ramga.org/what-s-happening>

Questions? Contact the Help Desk Team –

helpline@ramga.org

Call and leave a message at 540-463-4734

